

LTD7704/7708/7716 DRV

Mobile Viewing for iPhone

User Menu

1. System requires

Support Device	iPhone or iPod 2.0 or greater is required
Space Required	>800 KB Free space
Software required	iTunes (optional)

2. Install

- 1) Open your iPhone and click [App Store](#).
- 2) Under search bar , typing “[Meye sun](#)” and click search button. Download the Mobile Viewing Application for free, the file name is [Meye](#).
- 3) Click the [Meye](#) icon, The application begins to install on your iPhone.

3. Uninstall

Under your iPhone main menu, Press and hold the [Meye](#) icon for a few seconds, you will see the Delete Button to uninstall the [Meye](#).

4. Main menu

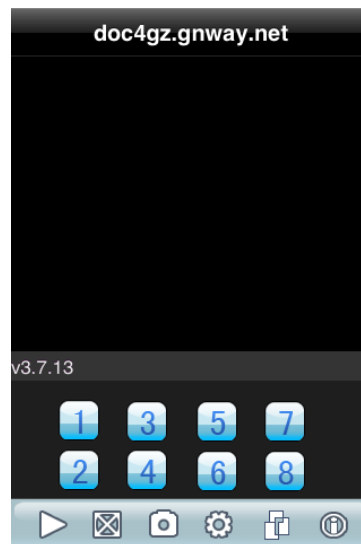







Figure 1 Main menu

Icon	Function	Description
	Play	Connecting to your cameras
	Full Screen	Switch full screen or window
	Snap Shot	Capture the image from your camera
	Settings	Setup your ip_address and port and your account info
	Next group	Next channel group (1~4, 5~8, 9~12, 13~16)

5. Connecting To Your Cameras

Once the application is installed on your phone, you can log in and access your system.

To use mobile viewing:

The screenshot shows an iPhone 'Settings' screen. At the top, there are 'Back' and 'Cancel' buttons. Below the title 'Settings', there are two sections: 'Server Info' and 'Account Info'. Under 'Server Info', there are two input fields: 'Address:' with the value 'doc4gz.gnway.net' and 'Port:' with the value '18600'. Under 'Account Info', there are two input fields: 'User ID:' with the value 'admin' and 'Password:' with masked characters '•••••'. Each input field has a small 'x' icon to its right for clearing the text.

Figure 2 settings

1. From your iPhone, click the [Meye](#) icon.
2. Click Settings. In the Username field enter [admin](#); in the Password field enter [admin](#).

3. Under Server info, enter the IP address of your system.

4. Under Port, enter the port number of your system.

NOTE: You can only view one channel at a time.

6. Click Back. And click play, The Mobile Viewer will connect automatically.

7. Use the Channel number Button to switch between cameras.

If you are having trouble connecting, please check the wireless network configuration on your phone.